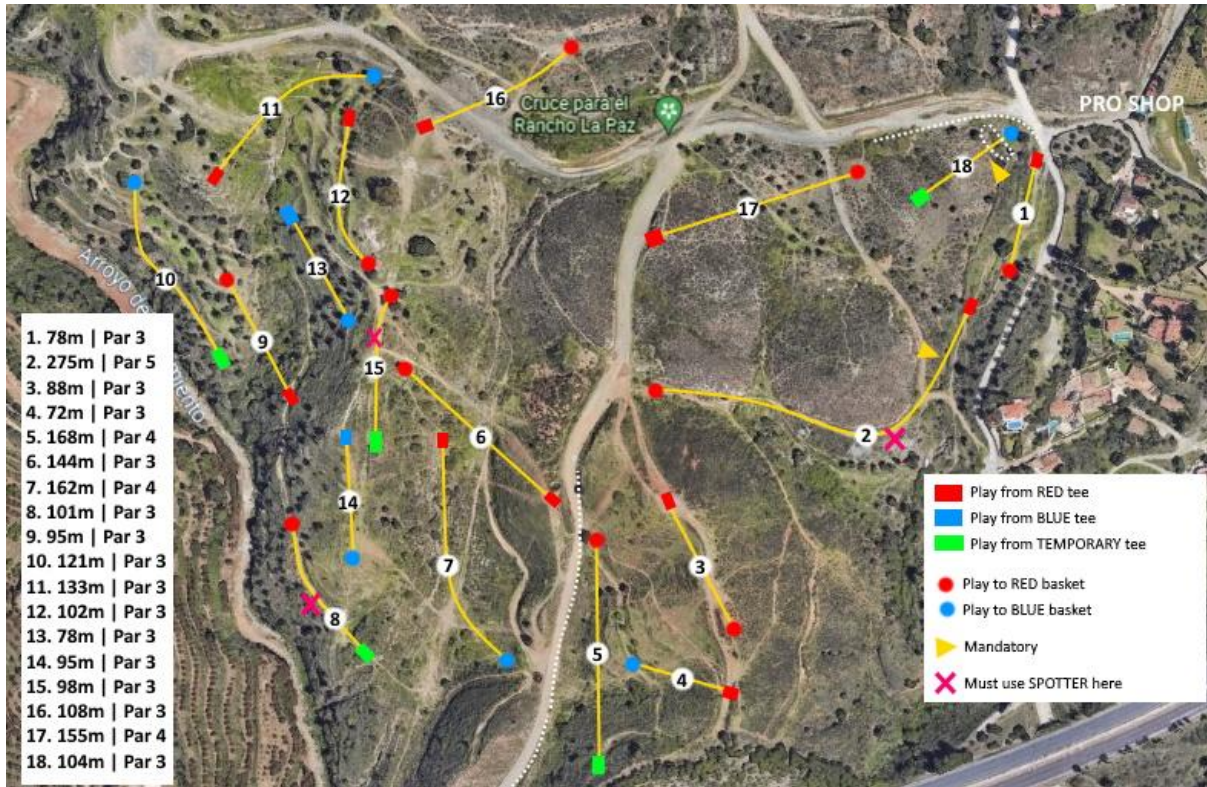


MIJAS EXPERIENCE -layout | Course Details



[Download PDF](#)

1. Red #1
2. From Red #2 tee to Red #3 basket. Mandatory must be passed from left side, dropzone near mando
MUST USE SPOTTER IN THE CORNER!!
3. Red #4
4. From Red #5 tee to Blue #15 basket
LET HOLE #5 PLAY FIRST
5. From temporary tee (near Blue #16 tee) to Red #5 basket. OB on the left side (road and beyond)
6. Red #6
7. From Red #7 tee to Blue #13 basket
8. Red #8 from temporary tee
9. Red #9. The gorge is a relief area. If your disc ends to gorge, play from where the disc went to gorge or from dropzone (without penalty)
10. From temporary tee to Blue #9 basket
11. From Red #12 tee to Blue #5 basket
12. Red #14
13. Blue #11
14. Blue #12
15. From temporary tee to Red #15 basket
16. Red #17
17. Red #18
18. From temporary tee to Blue #18 basket. OBs and mando are valid